

# See more with VC HD-1000 videocolposcope

Such type of device  
is indispensable  
for any gynecological office

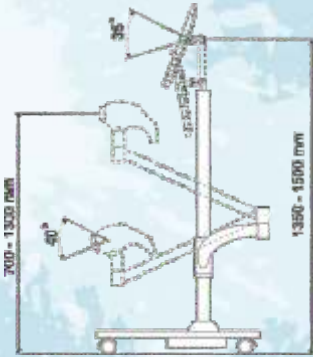


VC HD-1000 is significantly  
useful for:

- diagnosis of cervical carcinoma,
- detection of HPV infection,
- verify the results of cytological tests,
- recognition among  
inflammatory conditions,
- evaluation of changes  
in the cervix,
- and much more.

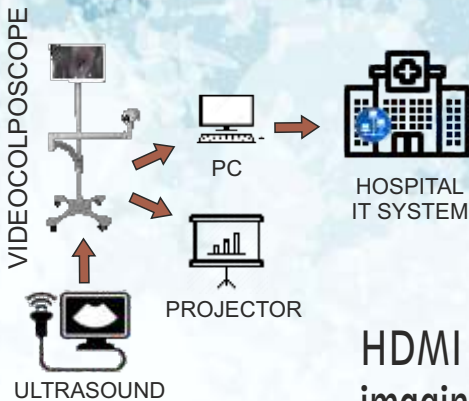


Looking for distributors



Wide range of head arm movement, with possibility to reduce taken place by arm closing.

Bright lens with x2 - x30 fast zoom, illuminator with adjustable lightness. Built in glare reduction system with polarization filter.



HDMI input to connect external imaging device (e.g. ultrasound),

HDMI outputs to connect to external imaging devices or hospital IT systems.

**ADVARTEC**

phone: +48 602 190 641

[info@advartec.eu](mailto:info@advartec.eu)

[www.advartec.eu](http://www.advartec.eu)

ul. Zabia 104  
42-400 Zawiercie  
POLAND

